



Exalead CloudView™ Search Edition

Organizations around the world are generating more data than ever. E-mail has become a vital business application for communication and more companies are transitioning to paperless offices, fueling the exponential growth of this form of information known as unstructured data. This type of data - whether it's in the form of e-mail, a document or spreadsheet, audio file or image - needs to be available in the blink of an eye so that employees can make informed business decisions.

Based on the **Exalead CloudView™** unified technology platform, **Exalead CloudView™ Search Edition** is easy to deploy and administer, and delivers high performance and accuracy.

▶ Advanced search options

Enterprise users can increase the accuracy of their search results with advanced technologies, including full-text search, unified search and multi-language search (Indo-European, Arabic, Chinese). Additionally, advanced natural language processing capabilities offer users spelling suggestions, phonetic matching, approximate matching and automatic lemmatization. These capabilities adapt to and evolve with content in real-time.

▶ Real-time indexing

Organizations are generating content more quickly than ever before. Naturally, new content should be searchable immediately. At the core of **Exalead CloudView™ Search Edition** and its other solutions is real-time indexing. This technology ensures new content is automatically integrated into the index to make it instantly available.

▶ Smart classification

Administrators can import, reuse and edit existing classifications to leverage existing technology investments or create new classification systems by extracting meta-data from existing documents.

▶ Assisted navigation

Exalead's unique patented navigation system removes the last barrier to unifying information sources. **Exalead CloudView™ Search Edition** automatically generates a customized table of contents based on each search results page, allowing users to further refine and explore related topics.



PRODUCT BENEFITS

- ▶ Revolutionizes decision-making
- ▶ Fuels new competitive insights
- ▶ Enhances productivity and efficiency
- ▶ Greatly increases IT agility
- ▶ Lowers overall IS costs

AT A GLANCE



Systems supported

- ▶ WINDOWS 32-bit: 2000, 2003, XP
- ▶ WINDOWS 64-bit: 2003 x64 and XP x64
- ▶ UNIX 32-bit: Linux 32-bit
- ▶ UNIX 64-bit: Solaris, Linux x86-64

Indexed sources

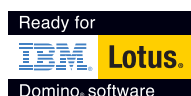
- ▶ Web-based: HTTP and HTTPS
- ▶ File-based: XML, Windows, and UNIX
- ▶ Directories: LDAP and MS Active Directory
- ▶ Mail: IMAP, Lotus Notes, MS Exchange, NNTP
- ▶ Databases: DB2, Informix, SQL Server, Sybase, Oracle, Text/CSV, MySql
- ▶ Applications: MS Office SharePoint Server 2007, eRoom, Documentum, Lotus Notes
- ▶ Others: Personalized connectors

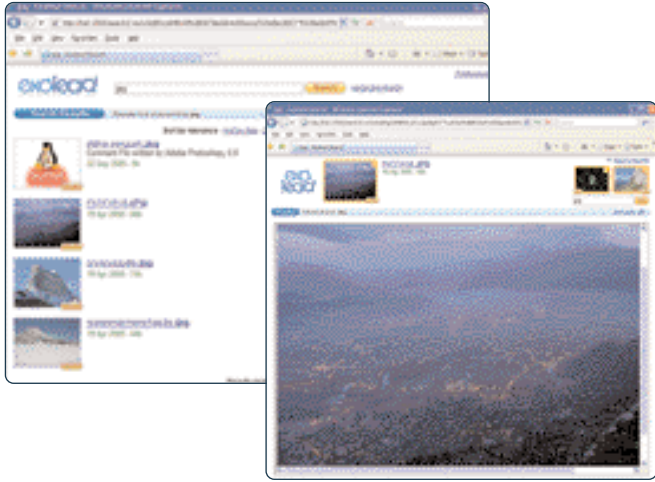
Indexed formats

Supports 300+ formats, including:

- ▶ Microsoft Office (Word, Excel, PowerPoint)
- ▶ Wordperfect, PDF, RTF, OpenOffice
- ▶ Web: HTML, XML, Internet shortcuts, Flash
- ▶ Image: JPEG, GIF, PNG, TIF, BMP, PSD, AI
- ▶ Audio: MP3, WMA, WAV
- ▶ Video: AVI, WMV, ASF

For further information, visit our website at <http://www.exalead.com/software/>





Exalead CloudView™ user interface with advanced preview capabilities

► Multi-platform support

Exalead CloudView™ Search Edition supports 32-bit and 64-bit server architectures, enabling users to process millions of documents with a single CPU and scale according to business needs. Additionally, the software supports open standards including Java™ so administrators can customize interfaces and build XML-based Web services for indexing and searching.

► Advanced administrative and customization options

The configuration tool allows administrators to easily control all processes running on the platform. Menus and wizards allow administrators to tailor the way the software functions based on business requirements. Developer tools allow administrators to assign user privileges according to security access levels; create specific ranking rules; modify the appearance of the results page and categories; change the color scheme; or create fully customized service-oriented applications.

► Key features

Search request processing

- Secure access.
- Supports boolean syntax, as well as AND, OR, NOT, NEAR operators.
- Multi-language: Indo-European, Arabic, Chinese.
- Word Stemming: uses statistical identification to identify common roots, genders, numbers or conjugations (lemmatization) and is not constrained by word case or accent marks.
- Spelling Correction: automatically integrates the terms (proper names and jargon) that are used, eliminating the need for dictionaries and thesauri.

User interface and navigation

- Multi-axial guided navigation: automatically creates a dynamic table of contents based on the search results. This hyperlinked navigation offers:
 - Categories based on your information sources: dates, file tree, authors, file format.
 - Automatic keyword generation; enabling you to refine and explore contents further.
- Exalead offers a preview pane and highlights the search terms in a given document.
- There is a smart bookmarking feature that allows users to store results.
- Information alert: automated search requests identify new content and send an alert via e-mail to the user when new information is found.

High-performance and real-time filtering technology infrastructure

- Unified integrated tool for lexical, grammatical, structural (XMLbased) and business-rules-based filtering.
- Named entity recognition (people, places, dates, currency).
- Thesaurus integration.
- Full-fledged document categorization module.
- Open architecture for integrating third-party semantic indexing technologies.

Integration and administration

- Open platform: **Exalead CloudView™ Search Edition** supports open standards, such as Java™ technology to code interfaces and XML-based Web services for indexing and searching, making it easy to integrate third-party technologies.
- CSS configuration.
- Real-time processing.
- Failure alarms and diagnostics: automatically alerts IT administrators upon detection of faults.
- HTTP client-server interface: compatible with enterprise content management servers and portals, such as Vignette, Broadvision, BEA and Microsoft.
- Standard browser-based administration interface: CSS2 compatible.
- Statistics module: most frequently consulted documents, top search requests, etc. plus full customization.