

Exalead CloudView™ for EMC Documentum Content Server

As the world leader in Document and Record Management, EMC is internationally recognized for its content management and archiving solutions. Documentum is one of the most widely deployed solutions used by organizations to manage documents and content and further collaboration across the enterprise.

However, accessing data and searching within the platform can be unfruitful, lowering the rate of adoption of the solution and impacting productivity in the workplace. It is now possible to enhance your Documentum experience and take full advantage of all that the platform has to offer and more.

1. The Challenge

Documentum is strong in its position due to its large set of functionalities and integration capabilities. It offers more than just a vast content repository. The solution can be integrated into other portals or accessed directly using Documentum's WebTop. It creates and extends the scope of collaborative workspace by allowing teams to share and repurpose content. As a result, organizations are creating more content at a faster rate, reinforcing the need for better indexing and search. However, harnessing and accessing this content is becoming increasingly more difficult and enterprises need a high performance search tool that can easily scale to handle the growth of information.

In today's increasingly competitive environment, it's essential for enterprises to have instant access to their Documentum environment and beyond. Organizations are seeking a 360° view of all content and applications (ERP, PLM, CRM, CMS, DMS, archives, wikis, blogs, etc.) in order to be more agile and responsive in their market and more importantly, to make critical business decisions. How do users in a Documentum environment gain a true 360° view of all enterprise information? Can this be achieved with a solution that matches Documentum's performance and is also easy to use and administer?

2. The Solution

Exalead, a recognized leader in information access, search and content integration, has developed a solution, specifically for Documentum and other content tools, that provides a true 360° view of the information in an enterprise.

Features

- Federation of content and data in a common interface
- One index for all your content
- Navigation and refinement capabilities
- Improved relevance and performance
- Access to non-Documentum content
- 360° view
- Leverage metadata

Benefits

- Federate all data in your portal
- Respect security access rights
- Improve relevancy & speed of search
- Extend search perimeter by adding sources
- Maximize investment by increasing use



Exalead CloudView has been designed from the ground up to offer users the best Usability while bringing IT services the best Agility and Performance.

Agility: CloudView enables unified access and search from the user's desktop by building a single view that includes information from all repositories (Documentum and non-Documentum content sources), regardless of their location (enterprise servers, content repositories, desktop, on the intranet/internet). This not only simplifies and streamlines usability for end users, but also for administrators and managers.

Usability: CloudView provides on-the-fly structures for better information navigation allowing users to "key word search" just like they do on Google, Yahoo! or Bing. In less than a second, relevant results, including emails, email attachments, wikis, blogs, Twitter threads, spreadsheets, videos, podcasts, etc., are returned from any repository, right from their Documentum client. In addition, CloudView provides features that deliver usability and effectiveness of search well beyond the limited capabilities of a Documentum search. These capabilities include:

- The ability to expand or refine search results
- Navigation of the results of content by category, filetype or other relevant metadata
- Extraction of named entities/related terms
- Thumbnails for results and document previews
- Spell checking of query entry
- Phonetic or wildcard search
- Summarization of results items
- Advanced search operators

Performance: The high performance of CloudView is designed to securely and efficiently collect and index all desired content and associated metadata (including ACLs) held in a variety of repositories such as Documentum, Sharepoint, etc., in various e-mail databases or in less common, proprietary sources. CloudView's scalability matches Documentum due to its native design for 64-bit environments (indexing up to tens of billions of documents), with real time indexing.

3. Integration and Deployment

CloudView is known for its easy integration and deployment. Some additional features include:

- **EMC Certification**

Exalead CloudView is certified by EMC for Documentum Content Server based on its easy implementation, configuration and ability to index Documentum content and data with a dedicated connector. Adding sources is a simple straightforward task performed through a centralized administration to manage all your data stored in a single index.

At-a-glance

Multi-Source

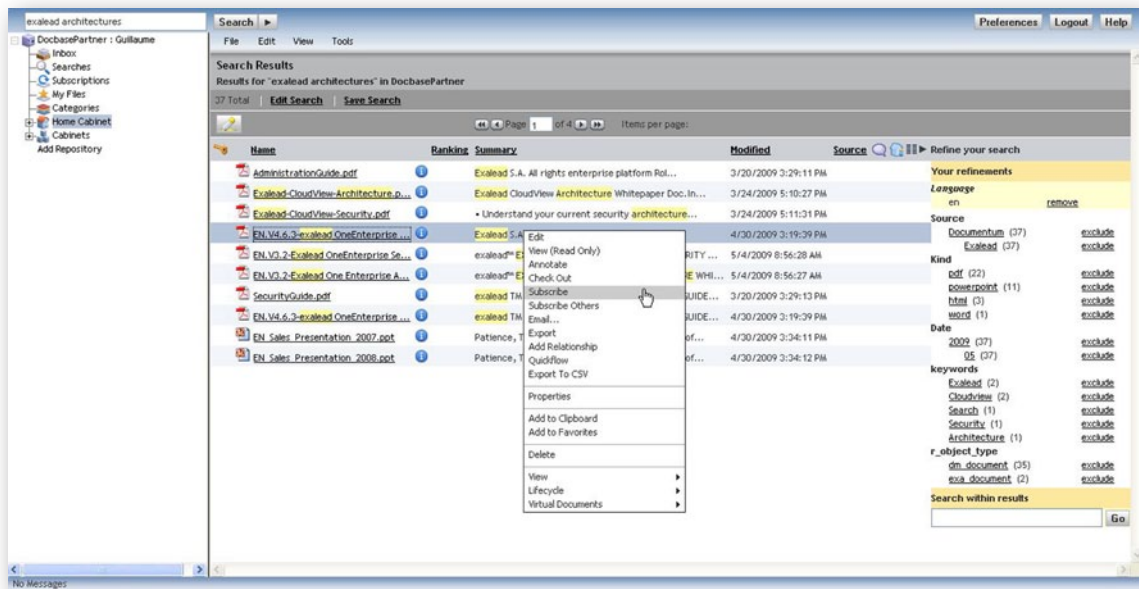
To get an exhaustive view of all available content, Exalead CloudView Search Edition provides connectors to index and search the major available sources:

- Web-based: HTTP and HTTPS
- File-based: XML, Windows, and UNIX
- Lotus Notes (databases and emails)
- Directories: Microsoft Active Directory and LDAP
- Mail: IMAP, Microsoft Exchange, NNTP
- Databases and content servers: eRoom, Sharepoint, ODBC, DB2, Informix, SQL Server, Sybase, Oracle, Text (CSV), MySQL
- Others: Customized connectors

Multi-Format

Exalead CloudView Search Edition supports more than 320 file formats to facilitate access to the widest variety of information resources:

- Microsoft Office (Word, Excel, Powerpoint)
- Wordpress, PDF, RTF, OpenOffice
- Web: HTML, XML, Internet shortcuts, Flash
- Image: JPEG, GIF, PNG, TIF, BMP, PSD, AI
- Audio: MP3, WMA, WAV
- Video: AVI, WMV, ASF



Exalead CloudView search in an EMC Documentum database

- A Dedicated Connector

Exalead's connector is based on Documentum Foundation Classes to provide the best functionalities and integration capabilities. All Documentum metadata, document versions and virtual documents are managed by CloudView.

- Possible Integration in the EMC Documentum Webtop

Due to CloudView's agility, users can either display the search results directly within the EMC Documentum Webtop or use Exalead CloudView as the Information Access point to access all data and content.

- Non-Intrusive

The solution is non-intrusive and does not require any modification of the Content Server or configuration elements to obtain relevant results. Existing Documentum security or any other security parameters (Local security, Active Directory, LDAP...) can also be used.

- Extended Connectivity and Integration

CloudView offers connectivity to Microsoft SharePoint and a dedicated WebPart, for users who decide to access EMC Documentum Content Server from this specific portal. Exalead CloudView is also certified for IBM Lotus and Domino software, ensuring that users with varied repositories will be able to leverage all enterprise content



Contact us to discover for yourself why Exalead is the right search platform to work with your structured and unstructured information.
Visit www.exalead.com to learn more.

About Exalead

- E.U. Headquarters, Paris, France - U.S. Headquarters, San Francisco, CA
- Offices in 7 countries
- 250+ customers worldwide
- Founded in 2000 by AltaVista executives

Exalead is a division of Dassault Systèmes, whose 9000 employees and 6000 partners provide 3D based applications, PLM based applications, and Search based applications to more than 115,000 customers in 80 countries.

Contact Us

Exalead, S.A.
10, place de la Madeleine
75008 Paris
France
Tel: +33 (0)1 55 35 26 26
Fax: +33 (0)1 55 35 26 27
www.exalead.com